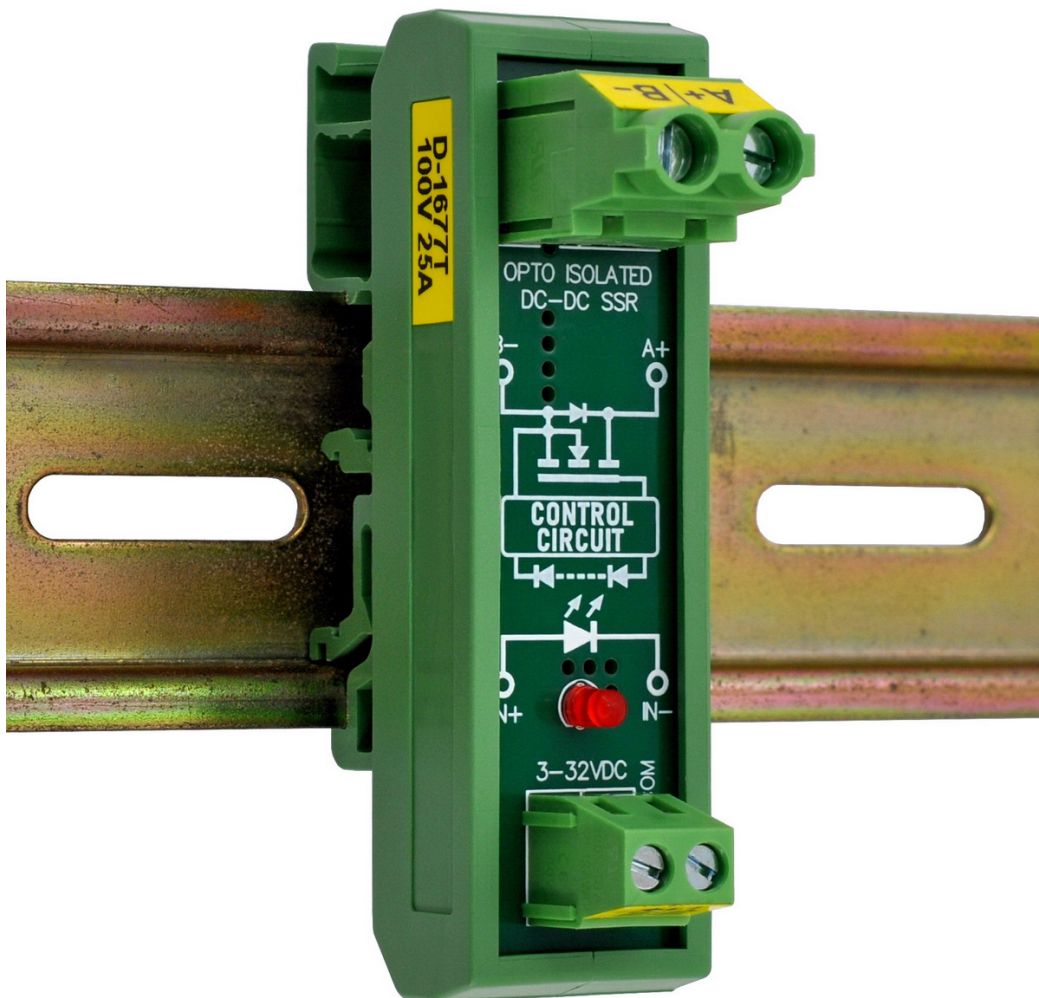


OONO®
CZH-LABS.com

DIN Rail Mount DC-DC Isolated SSR
Solid State Relay Module

Model: D-1677T Series



Features:

- This is a simple and practical solid state relay module, which is very convenient to use, for Arduino, Raspberry Pi, ESP32, PLC or other projects. The GPIO of these controllers are directly connected to this relay input to control the 5 to 30V high current DC power.
- Input signal turn-on voltage DC 3 to 32V, turn-off voltage DC 0 to 0.8V. LED indication for relay turn-on.
- Rated voltage: 60V, 100V and 200V optional. Maximum on-state average current 10 Amp and 25 Amp optional.
- Photocoupler isolation between input control signal and controlled power, isolation voltage 3750Vrms (min).
- High quality fireproof nylon material DIN rail mount carrier, can support width 35mm 32mm 15mm rail.
- UL CE certified nylon material mount carrier. FR-4 fiberglass material PCB, UL 94-V0 certified PCB. UL CE CQC certified terminal blocks.

Characteristic Parameters:

Operating temperature: -20 to 75°C [*note1](#)

Input Signal Control Terminal:

Action Voltage: 3 to 32 VDC.

Current: 11mA at 3VDC, 12mA at 5VDC, 14mA at 12VDC, 16mA at 24VDC, 18mA at 32VDC.

Turn off voltage: 0 to 0.8 VDC.

In-Out isolation voltage: 3750Vrms (min).

Output Terminal:

Rated voltage: DC 60V, 100V and 200V optional.

Maximum on-state continuous current 10 Amp and 25 Amp optional. [*note1](#)

Load type: General purpose.

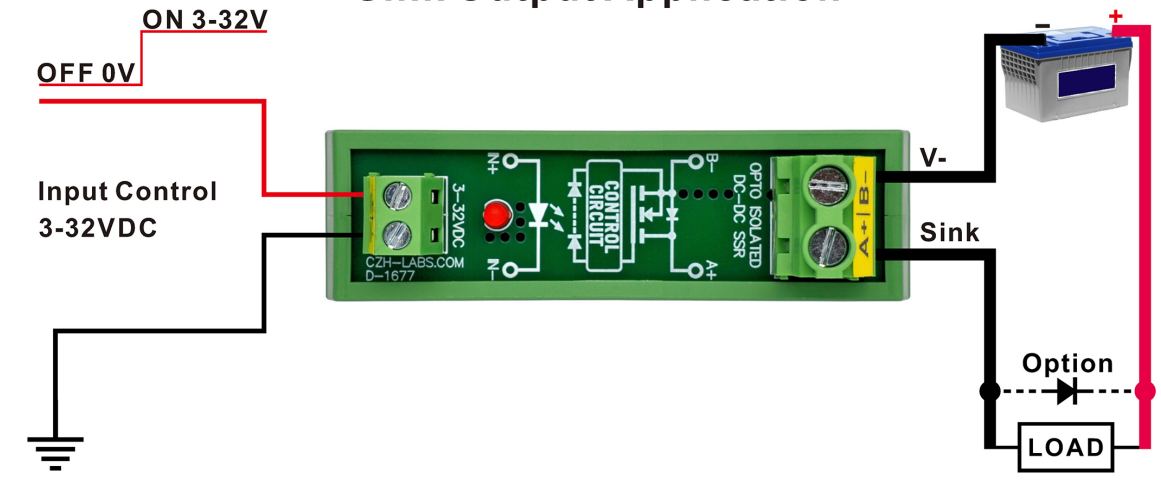
Other detailed parameters are shown in the table below:

| SKU | D-1677T/60V25A | D-1677T/100V25A | D-1677T/200V10A |
|---|----------------|-----------------|-----------------|
| Rated voltage | DC 60V | DC 100V | DC 200V |
| Max. continuous current *note1 | 25 Amp | 25 Amp | 10 Amp |
| Max. current (< 2 seconds). | 50 Amp | 50 Amp | 20 Amp |
| Non repetitive surge peak current (<400uS) | 400 Amp | 400 Amp | 160 Amp |
| On-state resistance | 1 milliohm | 1.3 milliohms | 12 milliohms |
| Turn-on delay time | < 3mS | < 5mS | < 2mS |
| Turn-off delay time | < 3mS | < 3mS | < 2mS |

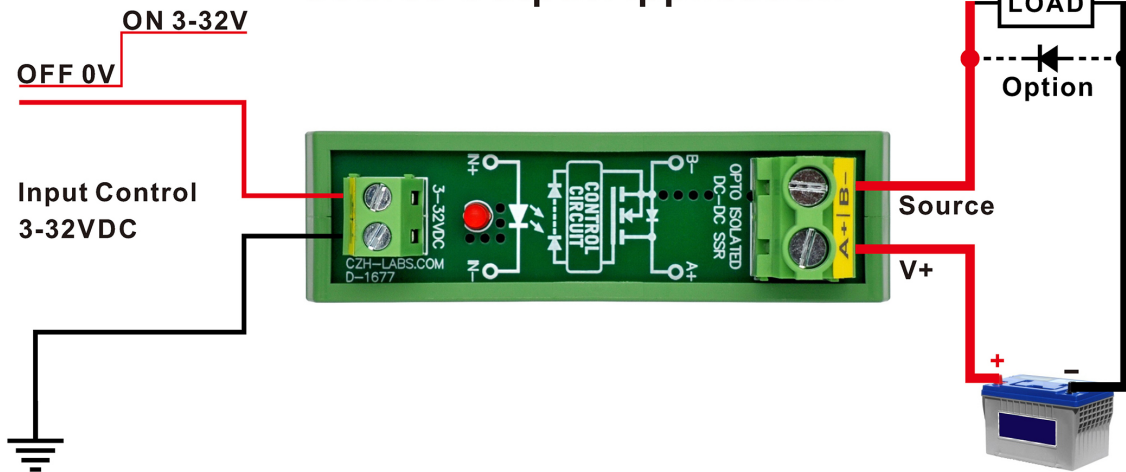
[*Note1](#): Maximum continuous current, the operating environment must meet 0 to 25°C and ensure good ventilation. Otherwise, please do not exceed 80% of the maximum continuous current value.

Typical Connection Diagram:

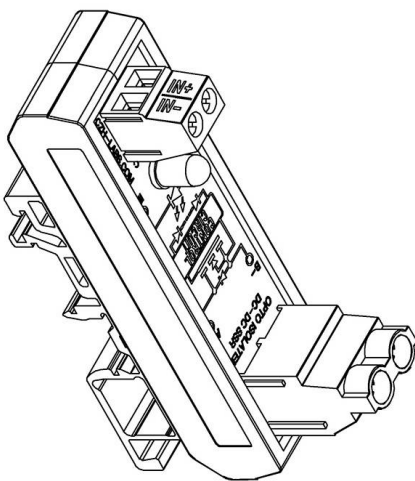
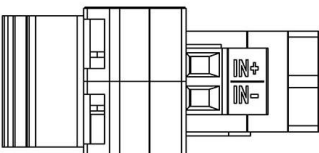
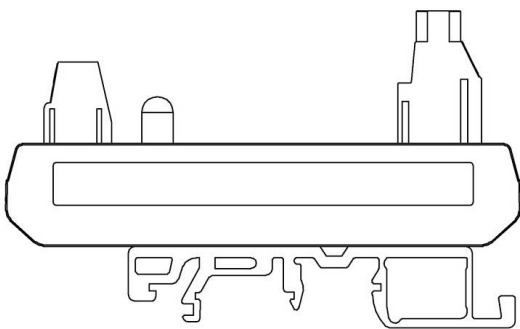
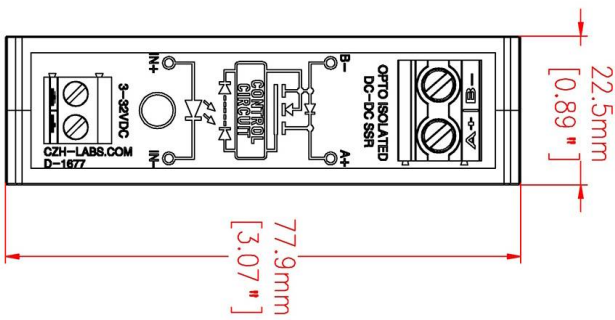
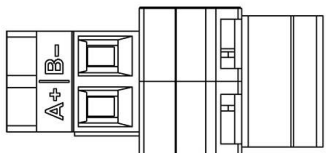
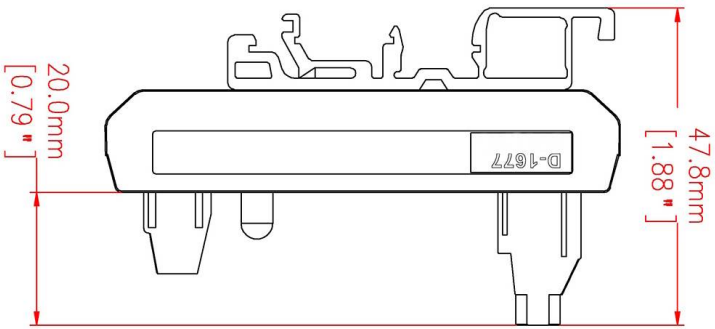
Sink Output Application



Source Output Application



Note: when this product is used with an inductive load, it is recommended to connect a freewheeling diode in parallel with the load.




00N0[®] czh-labs.com

MODEL NO: D-1677T SKU: MD-D1677T-1

PROJECTION:



| | |
|--------------------------------|--|
| 00N0 [®] czh-labs.com | |
| MODEL NO: D-1677T | SKU: MD-D1677T-1 |
| PROJECTION: |  |