

OONO[®]
CZH-LABS.com

50 Amp Forward & Reverse Relay Module

Model: F-1021 series (version 2.0)



Features:

- Reversing relay module. Powers any reversing motor equipment, can be used for any application that requires the ability to reverse motion.
- Support Momentary-action(Self-resetting) switch and Alternate-action (Self-holding) switch. For Self-resetting switch, when the switch is pressed the motor operates, and when the switch is released the motor stops.
- High quality aluminum enclosure, thickness 1.5mm/0.06". Diameter M6 / 6mm threaded copper terminals for battery and load. Connect switch terminal block: pitch 5.0mm/0.197", wire size 26~12 AWG / 2.5mm square, stripping length 7mm/0.28", Metric M2.5 slotted screw.
- Power on indicating red LED. Forward and Reverse status indicating LED, forward status lighting red, reverse lighting green.
- Operating voltage: 10~15VDC or 20~30VDC, Rated current: 50 Amp.

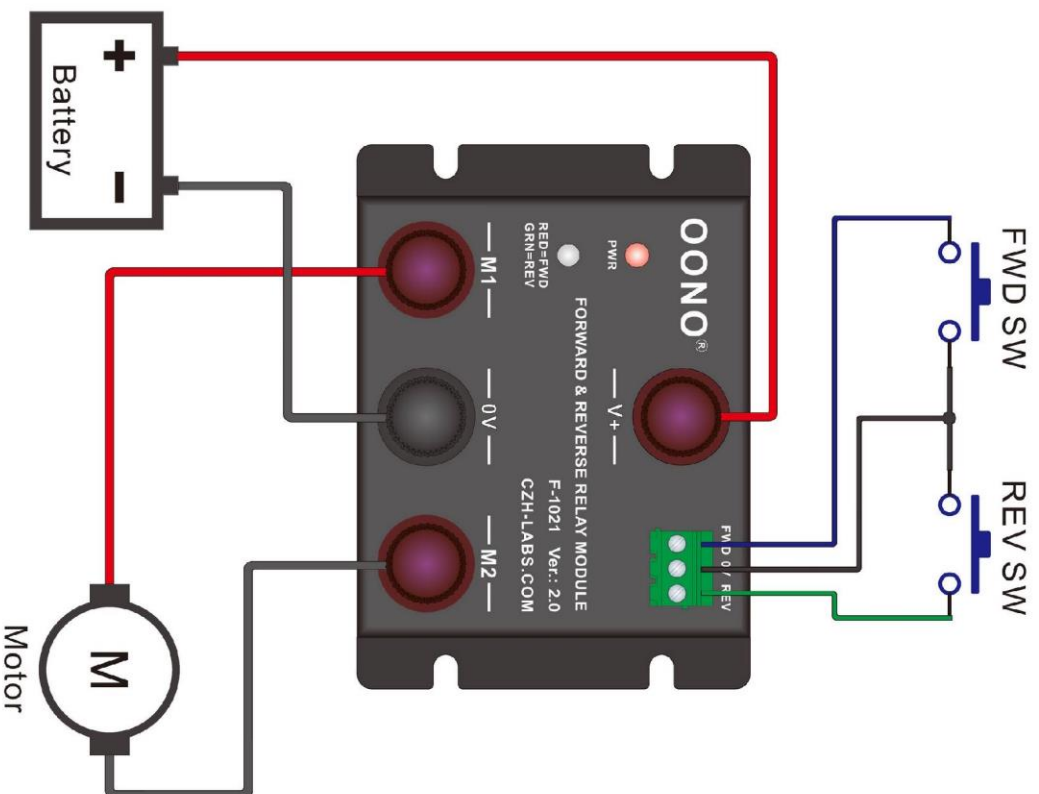
Specifications:

	12V Version	24V Version
Operating voltage	10 ~ 15V DC	20 ~ 30V DC
Switch short current	150mA @12V	75mA @24V
Switch disconnect voltage	= V+	
Load rated current	50A	
Static current consumption	0.5mA (for power on LED)	

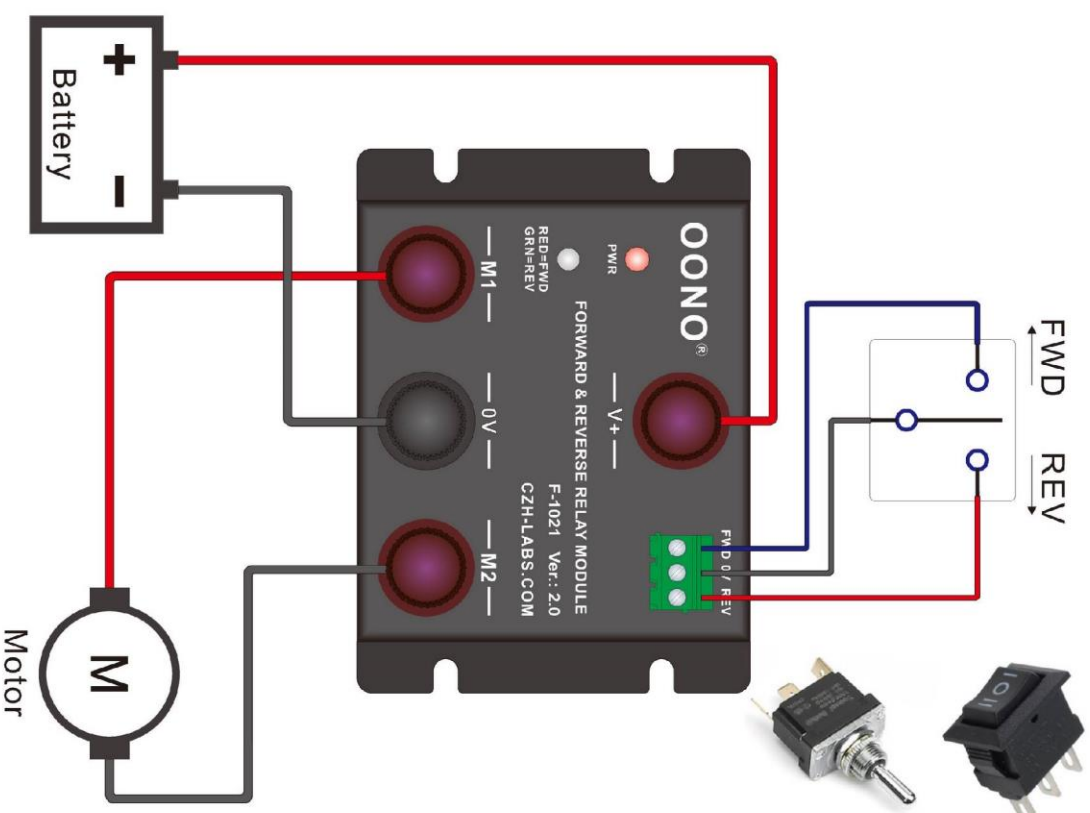
Action Status:

FWD Switch	REV Switch	M1 Voltage	M2 Voltage	Motor Status
Disconnect	Disconnect	0V	0V	Stop
Connect	Disconnect	V+	0V	Forward
Disconnect	Connect	0V	V+	Reverse
Connect	Connect	V+	V+	Stop

For Mementary-action Switch (Self-resetting)

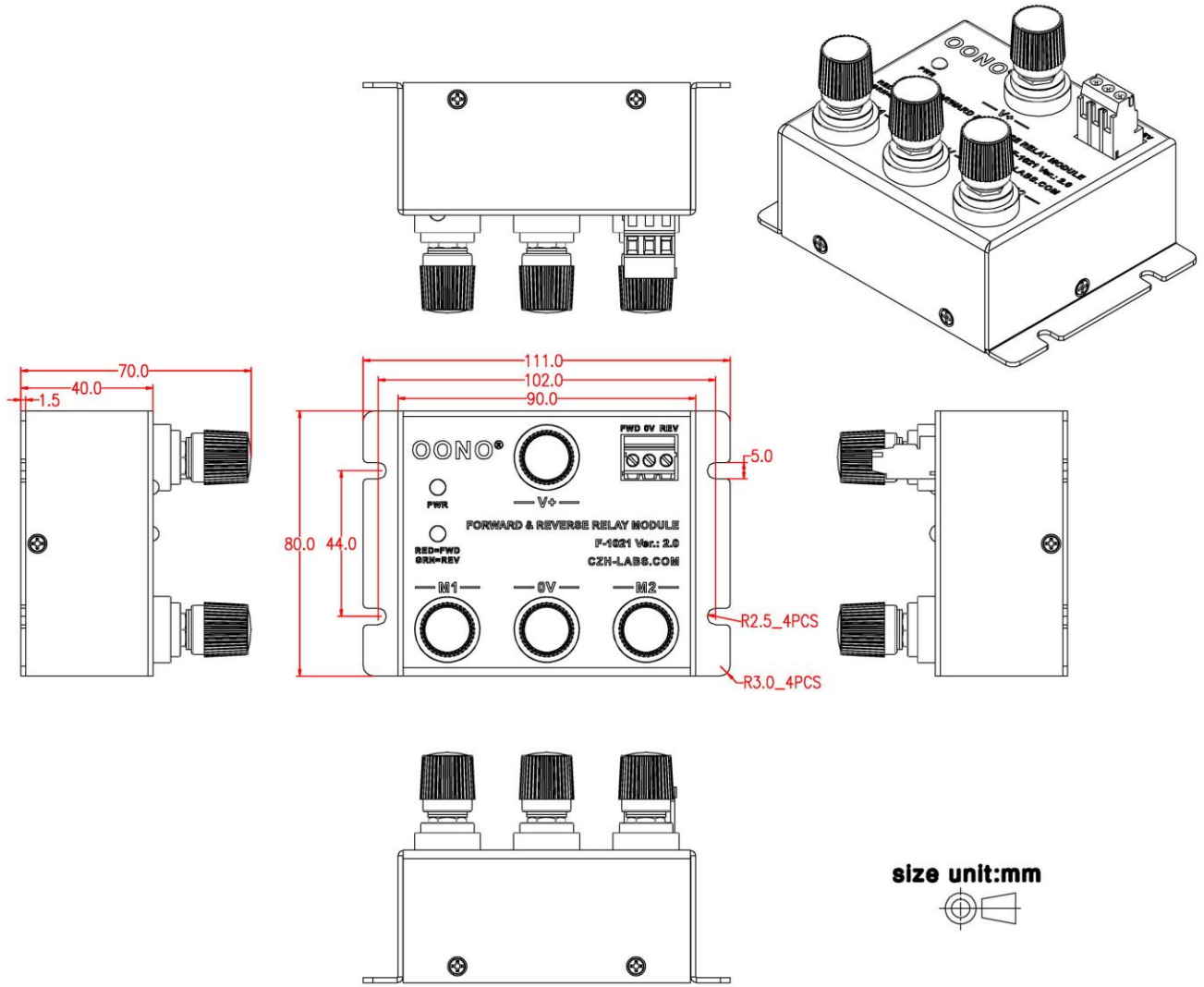


For Alternat-action Switch (Self-holding)



Wiring diagram:

Dimensions:



Version change records:

July-7-2021, from version 1.0 change to 2.0:

Changed the output action status.

Exchanged the positive and negative positions of the power supply.

Version 1.0 action status:

FWD Switch	REV Switch	M1 Voltage	M2 Voltage	Motor Status
Disconnect	Disconnect	V+	V+	Stop
Connect	Disconnect	V+	0V	Forward
Disconnect	Connect	0V	V+	Reverse
Connect	Connect	0V	0V	Stop

Version 2.0 action status:

FWD Switch	REV Switch	M1 Voltage	M2 Voltage	Motor Status
Disconnect	Disconnect	0V	0V	Stop
Connect	Disconnect	V+	0V	Forward
Disconnect	Connect	0V	V+	Reverse
Connect	Connect	V+	V+	Stop